

## Air Reserve Components

The Air Reserve Components for USAF are the Air National Guard and Air Force Reserve Command. Air Force Reserve Command stood up as a major command Feb. 17, 1997. The change in status, authorized by Congress in the Fiscal 1997 National Defense Authorization Act, was based on the experience gained from the Air Force Reserve component mobilization for Operations Desert Shield and Desert Storm.

# AFRC

## Air Force Reserve Command

Headquarters Robins AFB, Ga.

Established Feb. 17, 1997

Commander Maj. Gen. James E. Sherrard III

### MISSIONS

Support the active duty force  
 Serve in such missions as fighter, bomber, airlift, aerial refueling, rescue, special operations, aero-medical evacuation, aerial fire fighting, weather reconnaissance, space operations, airborne air control, flying training, and flight testing  
 Provide support and disaster relief in the US  
 Support national counterdrug efforts

### FORCE STRUCTURE

Air Reserve Personnel Center, Denver  
 Three Numbered Air Forces: **4th**, March ARB, Calif.; **10th**, NAS Fort Worth JRB (Carswell Field), Tex.; **22nd**, Dobbins ARB, Ga.  
 35 flying wings  
 Eight groups (one air refueling, one air control, one flying training, one rescue, one space, and three regional support)

### OPERATIONAL ACTIVITY

Allied Force, Shining Hope (Yugoslavia); airlift, air refueling, and fighter support (Bosnia); Coronet Oak (Central and South America); Northern/Southern Watch (Iraq)

### PERSONNEL

(as of Sept. 30, 2000)  
 Total AFRC (paid)\* 71,357  
     Officers 11,032  
     Enlisted 60,325  
 Civilians (non-ART) 4,914  
**Total 76,271**



*Lt. Col. "Hawkeye" Pierce (left) and Chuck Hanks and flight engineer SMSgt. Steve Bell fly one of Air Force Reserve Command's C-141Bs with new "glass cockpit" modifications. The mist is caused by air-conditioning and the humidity change during ascent and descent. The aircrew is from the 89th Airlift Squadron, Wright-Patterson AFB, Ohio.*

### EQUIPMENT

(PAI as of Sept. 30, 2000)		Recon/BM/C <sup>3</sup> I (WC-130)	10
Bomber (B-52)	8	SOF (MC-130)	12
Fighter/Attack (A/OA-10, F-16)	100	Tanker (HC-130, KC-135)	72
Helicopter (HH-60)	21	Transport (C-5, C-130, C-141)	167

\*Numbers for AFRC personnel assigned to Majcoms, FOAs, and DRUs are included here.

## AIR FORCE RESERVE COMMAND, ROBINS AFB, GA.

**Commander**  
Maj. Gen. James E. Sherrard III

<b>4th Air Force</b> March ARB, Calif.	<b>10th Air Force<sup>c</sup></b> NAS Fort Worth JRB (Carswell Field), Tex.	<b>22nd Air Force</b> Dobbins ARB, Ga.	<b>Air Reserve Personnel Center</b> Col. Laura C. Counts Denver
---	---	---	---

## 4th AIR FORCE (AMC), MARCH ARB, CALIF.

**Commander**  
Brig. Gen. James P. Czekanski

<b>349th Air Mobility Wing</b> Travis AFB, Calif. (C-5A/B, KC-10 <sup>a</sup> )	<b>433rd Airlift Wing</b> Kelly AFB, Tex. (C-5A)	<b>434th Air Refueling Wing</b> Grissom ARB, Ind. (KC-135R)	<b>445th Airlift Wing</b> Wright-Patterson AFB, Ohio (C-141C)
<b>446th Airlift Wing</b> McChord AFB, Wash. (C-17 <sup>a</sup> , C-141B)	<b>452nd Air Mobility Wing</b> March ARB, Calif. (C-141C, KC-135R)	<b>507th Air Refueling Wing</b> Tinker AFB, Okla. (KC-135R)	<b>916th Air Refueling Wing</b> Seymour Johnson AFB, S.C. (KC-135R)
<b>927th Air Refueling Wing</b> Selfridge ANGB, Mich. (KC-135E)	<b>932nd Airlift Wing</b> Scott AFB, Ill. (C-9 <sup>a</sup> )	<b>940th Air Refueling Wing</b> Beale AFB, Calif. (KC-135E)	<b>931st Air Refueling Group</b> McConnell AFB, Kan. (KC-135R <sup>a</sup> )

## 10th AIR FORCE (ACC), NAS FORT WORTH JRB (CARSWELL FIELD), TEX.

**Commander**  
Maj. Gen. John A. Bradley

<b>301st Fighter Wing<sup>c</sup></b> NAS Fort Worth JRB (Carswell Field), Tex. (F-16C/D)	<b>419th Fighter Wing</b> Hill AFB, Utah (F-16C/D)	<b>442nd Fighter Wing</b> Whiteman AFB, Mo. (OA-10A)	<b>482nd Fighter Wing</b> Homestead ARS, Fla. (F-16C)	<b>917th Wing</b> Barksdale AFB, La. (B-52H, OA-10A)
<b>919th Special Ops Wing</b> Duke Field, Fla. (MC-130E/P) <sup>b</sup>	<b>926th Fighter Wing<sup>c</sup></b> NAS New Orleans JRB (OA-10A)	<b>939th Rescue Wing</b> Portland IAP, Ore. (HC-130N/P, HH-60G)	<b>944th Fighter Wing</b> Luke AFB, Ariz. (F-16C/D) <sup>b</sup>	
<b>310th Space Group</b> Schriever AFB, Colo.	<b>340th Flying Training Group</b> Randolph AFB, Tex. (AT/T-38, T-1, T-37) <sup>a</sup>	<b>513th Air Control Group</b> Tinker AFB, Okla. (E-3 <sup>a</sup> )	<b>Det. 1</b> Shaw AFB, S.C. (F-16C/D) <sup>a</sup>	

## 22nd AIR FORCE (AMC), DOBBINS ARB, GA.

**Commander**  
Brig. Gen. James D. Bankers

<b>94th Airlift Wing</b> Dobbins ARB, Ga. (C-130H)	<b>302nd Airlift Wing</b> Peterson AFB, Colo. (C-130H)	<b>315th Airlift Wing</b> Charleston AFB, S.C. (C-17A <sup>a</sup> )	<b>403rd Wing</b> Keesler AFB, Miss. (C-130E, WC-130H/J)
<b>439th Airlift Wing</b> Westover ARB, Mass. (C-5A)	<b>440th Airlift Wing</b> General Mitchell IAP/ARS, Wis. (C-130H)	<b>459th Airlift Wing</b> Andrews AFB, Md. (C-141B/C)	<b>512th Airlift Wing</b> Dover AFB, Del. (C-5A/B <sup>a</sup> )
<b>514th Air Mobility Wing</b> McGuire AFB, N.J. (C-141B, KC-10A) <sup>a</sup>	<b>908th Airlift Wing</b> Maxwell AFB, Ala. (C-130H)	<b>910th Airlift Wing</b> Youngstown-Warren Regional Airport/ARS, Ohio (C-130H)	<b>911th Airlift Wing</b> Pittsburgh IAP/ARS (C-130H)
<b>913th Airlift Wing</b> Willow Grove ARS, Pa. (C-130E)	<b>914th Airlift Wing</b> Niagara Falls IAP/ARS, N.Y. (C-130H)	<b>934th Airlift Wing</b> Minneapolis-St. Paul IAP/ ARS, Minn. (C-130E)	

<sup>a</sup>Associate aircraft.

<sup>b</sup>AFRC-owned and associate aircraft.

<sup>c</sup>Tenant unit on naval base.

**ANGB** Air National Guard Base  
**ARB** Air Reserve Base  
**ARS** Air Reserve Station

**IAP** International Airport  
**JRB** Joint Reserve Base  
**NAS** Naval Air Station

# Air National Guard

Headquarters Washington

Established Sept. 18, 1947

Director Maj. Gen. Paul A. Weaver Jr.

## MISSIONS

Provide trained units and individuals in support of national military objectives, as a full partner in the Total Air Force

Support state governors by providing equipment and trained individuals to help preserve peace, order, and public safety

## FORCE STRUCTURE

One NAF: **1st**, Tyndall AFB, Fla.  
Flying units: 91 wings

## OPERATIONAL ACTIVITY

Allied Force (Yugoslavia); Coronet Nighthawk (Central America); Coronet Oak (South America); Joint Guard (Bosnia); Northern/Southern Watch (Iraq); relief missions for victims of several major hurricanes; partnership programs with nations of the former Soviet Union

## PERSONNEL

(as of Sept. 30, 2000)

Total ANG military*	106,366
Officers	13,346
Enlisted	93,020
Civilian	1,358
<b>Total</b>	<b>107,724</b>

\*Includes ANG personnel assigned to Majcoms, FOAs, and DRUs.

## EQUIPMENT

(PAI as of Sept. 30, 2000)

Bomber (B-1)	16
Fighter/Attack (A/OA-10, F-15, F-16)	643

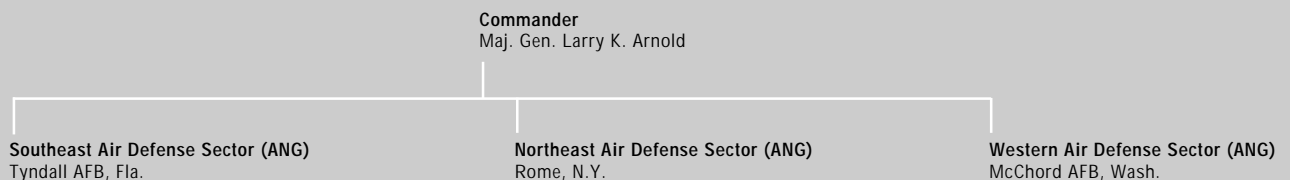


USAF photo by SSgt. Sean M. Worrell

*Lt. Col. John Wisniewki, an F-15 pilot from the 122nd Fighter Squadron, Louisiana ANG, gives a time hack at an Operation Southern Watch preflight briefing at Prince Sultan AB, Saudi Arabia.*

Helicopter (HH-60)	15
Recon/BM/C <sup>3</sup> I (EC-130)	4
Tanker (HC-130, KC-135)	211
Transport (C-5, C-21, C-22, C-26, C-38, C-130, C-141)	264

## 1st AIR FORCE (ACC), TYNDALL AFB, FLA.



# The Air National Guard by Major Command Assignment

(As of April 1, 2001)

## Air Combat Command

### A/OA-10A

103rd Fighter Wing  
104th Fighter Wing  
110th Fighter Wing  
111th Fighter Wing  
124th Wing<sup>a</sup>  
175th Wing<sup>a</sup>

Bradley IAP, Conn.  
Barnes MAP, Mass.  
W.K. Kellogg Airport, Mich.  
Willow Grove ARS, Pa.  
Boise Air Terminal, Idaho  
Martin State Airport, Md.

### B-1B

116th Bomb Wing  
184th Bomb Wing

Robins AFB, Ga.  
McConnell AFB, Kan.

### F-15

131st Fighter Wing  
159th Fighter Wing

Lambert–St. Louis IAP, Mo.  
NAS New Orleans JRB<sup>b</sup>

### F-15—air defense

102nd Fighter Wing  
125th Fighter Wing  
142nd Fighter Wing

Otis ANGB, Mass.  
Jacksonville IAP, Fla.  
Portland IAP, Ore.

### F-16

113th Wing  
114th Fighter Wing  
115th Fighter Wing  
119th Fighter Wing  
120th Fighter Wing  
122nd Fighter Wing  
127th Wing<sup>a</sup>  
132nd Fighter Wing  
138th Fighter Wing  
140th Wing  
147th Fighter Wing  
148th Fighter Wing  
150th Fighter Wing  
158th Fighter Wing  
169th Fighter Wing  
174th Fighter Wing  
177th Fighter Wing  
180th Fighter Wing  
181st Fighter Wing  
183rd Fighter Wing  
185th Fighter Wing  
187th Fighter Wing  
188th Fighter Wing  
192nd Fighter Wing

Andrews AFB, Md.  
Joe Foss Field, S.D.  
Truax Field, Wis.  
Hector IAP, N.D.  
Great Falls IAP, Mont.  
Fort Wayne IAP, Ind.  
Selfridge ANGB, Mich.  
Des Moines IAP, Iowa  
Tulsa IAP, Okla.  
Buckley ANGB, Colo.  
Ellington Field, Tex.  
Duluth IAP, Minn.  
Kirtland AFB, N.M.  
Burlington IAP, Vt.  
McEntire ANGS, S.C.  
Syracuse Hancock IAP, N.Y.  
Atlantic City IAP, N.J.  
Toledo Express Airport, Ohio  
Hulman RAP, Ind.  
Capital MAP, Ill.  
Sioux Gateway Airport, Iowa  
Dannelly Field, Ala.  
Fort Smith MAP, Ark.  
Richmond IAP, Va.

### F-16—air defense

144th Fighter Wing

Fresno Yosemite IAP, Calif.

### HC-130/HH-60

106th Rescue Wing

Francis S. Gabreski IAP, N.Y.

### MC-130/HH-60

129th Rescue Wing

Moffett Federal Airfield, Calif.<sup>c</sup>

## Air Force Special Operations Command

### EC-130E

193rd Special Ops Wing Harrisburg IAP, Pa.

## Air Mobility Command

### C-5A

105th Airlift Wing Stewart IAP, N.Y.

### C-130

109th Airlift Wing  
118th Airlift Wing  
123rd Airlift Wing  
130th Airlift Wing  
133rd Airlift Wing

Schenectady County Airport, N.Y.  
Nashville Metropolitan Airport, Tenn.  
Louisville IAP/AGS, Ky.  
Yeager Airport, W.Va.  
Minneapolis–St. Paul IAP/ARS, Minn.

136th Airlift Wing

137th Airlift Wing

139th Airlift Wing

143rd Airlift Wing

145th Airlift Wing

146th Airlift Wing

152nd Airlift Wing

153rd Airlift Wing

156th Airlift Wing

165th Airlift Wing

166th Airlift Wing

167th Airlift Wing

179th Airlift Wing

182nd Airlift Wing

179th Airlift Wing

182nd Airlift Wing

179th Airlift Wing

182nd Airlift Wing

179th Airlift Wing

182nd Airlift Wing

179th Airlift Wing

182nd Airlift Wing

179th Airlift Wing

182nd Airlift Wing

179th Airlift Wing

182nd Airlift Wing

179th Airlift Wing

182nd Airlift Wing

179th Airlift Wing

182nd Airlift Wing

179th Airlift Wing

182nd Airlift Wing

179th Airlift Wing

182nd Airlift Wing

179th Airlift Wing

182nd Airlift Wing

179th Airlift Wing

182nd Airlift Wing

179th Airlift Wing

182nd Airlift Wing

179th Airlift Wing

182nd Airlift Wing

179th Airlift Wing

182nd Airlift Wing

179th Airlift Wing

182nd Airlift Wing

179th Airlift Wing

182nd Airlift Wing

179th Airlift Wing

182nd Airlift Wing

179th Airlift Wing

182nd Airlift Wing

179th Airlift Wing

182nd Airlift Wing

179th Airlift Wing

182nd Airlift Wing

179th Airlift Wing

182nd Airlift Wing

Stewart IAP, N.Y.

Schenectady County Airport, N.Y.

Nashville Metropolitan Airport, Tenn.

Louisville IAP/AGS, Ky.

Yeager Airport, W.Va.

Minneapolis–St. Paul IAP/ARS, Minn.

NAS Fort Worth JRB, Tex.<sup>b</sup>

Will Rogers World Airport, Okla.

Rosecrans Memorial Airport, Mo.

Quonset State Airport, R.I.

Charlotte/Douglas IAP, N.C.

Channel Islands ANGS, Calif.

Reno/Tahoe IAP, Nev.

Cheyenne MAP, Wyo.

Luis Munoz Marin IAP, Puerto Rico

Savannah IAP, Ga.

New Castle County Airport, Del.

Eastern West Virginia RAP/  
Shepherd Field, W.Va.

Mansfield Lahm Airport, Ohio

Greater Peoria RAP, Ill.

Memphis IAP, Tenn.

Jackson IAP, Miss.

Memphis IAP, Tenn.

Jackson IAP, Miss.

### C-141C

164th Airlift Wing

172nd Airlift Wing

164th Airlift Wing

172nd Airlift Wing

164th Airlift Wing

172nd Airlift Wing

164th Airlift Wing

172nd Airlift Wing

164th Airlift Wing

172nd Airlift Wing

164th Airlift Wing

172nd Airlift Wing

164th Airlift Wing

172nd Airlift Wing

164th Airlift Wing

172nd Airlift Wing

164th Airlift Wing

172nd Airlift Wing

164th Airlift Wing

172nd Airlift Wing

164th Airlift Wing

172nd Airlift Wing

164th Airlift Wing

172nd Airlift Wing

164th Airlift Wing

172nd Airlift Wing

164th Airlift Wing

172nd Airlift Wing

164th Airlift Wing

172nd Airlift Wing

164th Airlift Wing

172nd Airlift Wing

164th Airlift Wing

172nd Airlift Wing

164th Airlift Wing

172nd Airlift Wing

164th Airlift Wing

172nd Airlift Wing

164th Airlift Wing

172nd Airlift Wing

Bangor IAP, Maine

Niagara Falls IAP/ARS, N.Y.

McGuire AFB, N.J.

Birmingham Airport, Ala.

Rickenbacker IAP, Ohio

Scott AFB, Ill.

General Mitchell IAP/ARS, Wis.

McGhee Tyson Airport, Tenn.

Fairchild AFB, Wash.

Salt Lake City IAP

Lincoln MAP, Neb.

Pease Intl. Tradeport ANGS, N.H.

Sky Harbor IAP, Ariz.

March ARB, Calif.

Pittsburgh IAP/ARS

Key Field, Miss.

Forbes Field, Kan.

## Air Education and Training Command

### F-15

173rd Fighter Wing Klamath Falls IAP, Ore.

### F-16

149th Fighter Wing  
162nd Fighter Wing  
178th Fighter Wing

Kelly AFB, Tex.  
Tucson IAP, Ariz.  
Springfield–Beckley MAP, Ohio

### C-130 (training)

189th Airlift Wing Little Rock AFB, Ark.

## Pacific Air Forces

### C-130

154th Wing (204th Airlift Sq.) Hickam AFB, Hawaii  
176th Wing<sup>d</sup> Kulis ANGB, Alaska

### F-15

154th Wing<sup>e</sup> (199th FS) Hickam AFB, Hawaii

154th Wing<sup>e</sup> (199th FS) Hickam AFB, Hawaii

154th Wing<sup>e</sup> (199th FS) Hickam AFB, Hawaii

154th Wing<sup>e</sup> (199th FS) Hickam AFB, Hawaii

154th Wing<sup>e</sup> (199th FS) Hickam AFB, Hawaii

154th Wing<sup>e</sup> (199th FS) Hickam AFB, Hawaii

154th Wing<sup>e</sup> (199th FS) Hickam AFB, Hawaii

154th Wing<sup>e</sup> (199th FS) Hickam AFB, Hawaii

154th Wing<sup>e</sup> (199th FS) Hickam AFB, Hawaii

154th Wing<sup>e</sup> (199th FS) Hickam AFB, Hawaii

154th Wing<sup>e</sup> (199th FS) Hickam AFB, Hawaii

154th Wing<sup>e</sup> (199th FS) Hickam AFB, Hawaii

154th Wing<sup>e</sup> (199th FS) Hickam AFB, Hawaii

154th Wing<sup>e</sup> (199th FS) Hickam AFB, Hawaii

154th Wing<sup>e</sup> (199th FS) Hickam AFB, Hawaii

<sup>a</sup>Also flies C-130s.

<sup>b</sup>Naval base.

<sup>c</sup>NASA installation.

<sup>d</sup>Includes 210th Rescue Squadron with HC-130 and HH-60G aircraft.

<sup>e</sup>Includes 203rd Air Refueling Squadron with KC-135 aircraft.